

- ① RECEPTACLES AND COVERPLATES DESIGNATED "SF" SHALL BE WHITE IN COLOR AND CEILING MOUNTED. REFER TO ARCHITECTURAL PLANS. SUBMIT BOX FROM STRUCTURE.
- ② RECEPTACLES AND COVERPLATES IN "NON-SALES" SHALL BE WHITE IN COLOR. MOUNT ALL RECEPTACLES AT 15" A.F.F., EXCEPT AS NOTED ON PLAN.
- ③ CONDUIT FOR TRAFFIC COUNTER. INSTALL 1" CONDUIT FROM JF'S ENCLOSURE TO J-BOX AT THE MAIN ENTRY OF STORE. LOCATE J-BOX WITHIN 18" OF SOFFIT FOR FUTURE INSTALLATION OF THE TRAFFIC COUNTER.
- ④ INSTALL A DELIVERY BUZZER SYSTEM AS SHOWN ON DRAWINGS. L&S&C SHALL FURNISH A COMPLETE EDWARDS DELIVERY BUZZER SYSTEM, COMPLETE WITH TRANSFORMER, BUZZERS, LOUVERED COVERINGS, AND PUSHBUTTON (WEATHERPROOF FOR OUTSIDE LOCATIONS). THE ELECTRICAL CONTRACTOR SHALL FURNISH AND INSTALL ALL NECESSARY JUNCTION BOXES, CONDUIT, AND WIRE TO COMPLETELY INSTALL THE DELIVERY BUZZER SYSTEM. ALL JUNCTION BOXES SHALL BE MOUNTED VERTICALLY. REFER TO SHEET A11.01, DETAIL E FOR MORE INFORMATION.
- ⑤ TELEPHONE OUTLET IN WALL FOR SECURITY SYSTEM. INSTALL EMPTY 3/4" CONDUIT, WITH PULLWIRE, BACK TO TELCO SECTION OF JF'S ENCLOSURE. TELEPHONE WIRE AND #RJ45 JACK FOR TWO LINE TELEPHONE BY OTHERS. SEE PLAN FOR HEIGHT.
- ⑥ EXTEND 1" TELEPHONE CONDUIT FROM SERVICE ENTRANCE AT DEMISING WALL TO TELEPHONE/DATA SECTION OF JF'S ENCLOSURE.
- ⑦ SOUND SYSTEM. E.C TO FURNISH AND INSTALL ALL CONDUIT AND JUNCTION BOXES, AND PERFORM ALL WORK AS INDICATED IN THE DETAIL.
- ⑧ FURNISH AND INSTALL A 3/4" CONDUIT WITH PULLWIRE FROM HVAC SECTION OF JF'S ENCLOSURE, UP TO ABOVE CEILING. COORDINATE EXACT REQUIREMENT WITH MECHANICAL CONTRACTOR.
- ⑨ JF'S ENCLOSURE. ALL CONDUITS SUBMITTED INTO ITS ENCLOSURE SHALL BE INSTALLED IN A CLEAN AND NEAT MANNER. ANCHOR ITS ENCLOSURE ACCORDING TO MANUFACTURERS SPECIFICATIONS AND LOCAL CODES IN SEISMIC AREAS. REFER TO SPECIFICATIONS AND E05.01 FOR MORE INFORMATION.
- ⑩ PROVIDE JUNCTION ABOVE CEILING FOR DRINKING FOUNTAIN CHILLER. COORDINATE REQUIREMENT WITH PLUMBING CONTRACTOR.
- ⑪ PROVIDE JUNCTION BOX AT 60" AFF. FOR VOLUME CONTROL. PROVIDE 1/2" EMPTY CONDUIT WITH PULL STRING TO MUSIC SYSTEM AT MANAGER'S DESK.
- ⑫ USE CHARGER RECEPTACLE AND COVERPLATE SHALL BE WHITE. PROVIDE DEEP BACK BOX TO FIT RECEPTACLE PER MANUFACTURER REQUIREMENTS.
- ⑬ INSTALL BUTTON FOR IP CAMERA SYSTEM. COORDINATE EXACT LOCATION WITH L&S&C'S PROJECT MANAGER. SEE DETAIL-K SHEET E04.02.
- ⑭ HOME RUN TO VIDEO DRIVER CABINET.

- 13 JUNCTION BOX INSTALLED AT 48" A.F.F. WITH FACE FLUSH TO DRYWALL AND 1/2" CONDUIT UP IN WALL TO ABOVE CEILING FOR TEMPERATURE T-STAT(S)/SENSOR(S). COORDINATE EXACT REQUIREMENTS WITH MECHANICAL CONTRACTOR. MECHANICAL CONTRACTOR SHALL INSTALL LS&C FURNISHED CONDUIT CABLE FROM JUNCTION BOX TO HVAC UNITS.
- 14 MECHANICAL CONTRACTOR SHALL FURNISH AND INSTALL AIR EXHAUST OR ACCESS PANEL TO BE USED AS ACCESS TO EQUIPMENT LOCATED ABOVE THE CEILING. THIS CONTRACTOR SHALL BE RESPONSIBLE TO ENSURE THAT A MINIMUM UNOBSTRUCTED FREE AREA OF 3-FEET VERTICALLY AND 5'-FEET HORIZONTALLY IN ALL DIRECTIONS AROUND EQUIPMENT IS MAINTAINED TO ALLOW FOR INSTALLATION AND MAINTENANCE OF EQUIPMENT. IF THIS FREE AREA CANNOT BE OBTAINED, CONTACT THE LS&C'S PROJECT MANAGER IMMEDIATELY.
- 17 20 AMP, 120 VOLT RECEPTACLE @ 42" A.F.F. FOR MICROWAVE. IF PLAN LOCATION IS NOT ACCEPTABLE, IMMEDIATELY CONTACT LS&C PROJECT MANAGER FOR DIRECTION. SEE SHEET A14.02 FOR ADDITIONAL INFORMATION.
- 18 20 AMP, 120 VOLT RECEPTACLE @ 18" A.F.F. FOR REFRIGERATOR. IF PLAN LOCATION IS NOT ACCEPTABLE, IMMEDIATELY CONTACT LS&C PROJECT MANAGER FOR DIRECTION. SEE SHEET A14.02 FOR ADDITIONAL INFORMATION.
- 19 JUNCTION BOX FOR WATER HEATER ELECTRICAL CONNECTION. FURNISH AND INSTALL CODE REQUIRED DISCONNECT SWITCH. COORDINATE EXACT LOCATION AND RELATED REQUIREMENTS WITH PLUMBING CONTRACTOR PRIOR TO WORK COMMENCEMENT.
- 20 JUNCTION BOX MOUNTED AT 42" A.F.F. FOR HAND-DRYER/ELECTRICAL CONNECTION (FOR PUBLIC-ACCESSIBLE RESTROOMS-ONLY). COORDINATE EXACT LOCATION WITH ARCHITECT AND LS&C PROJECT MANAGER PRIOR TO WORK COMMENCEMENT.
- 21 DUCT MOUNTED SMOKE DETECTOR IS FIELD INSTALLED BY THE FIRE ALARM CONTRACTOR. ELECTRICAL CONTRACTOR SHALL INTERLOCK SMOKE DETECTOR WITH HVAC UNIT. REMOTE TEST ALARM STATION AND LANDLORD'S FIRE ALARM SYSTEM. MAKE ALL FINAL CONNECTIONS AS REQUIRED FOR A COMPLETE SYSTEM. HVAC UNIT TO SHUT DOWN UPON ACTIVATION OF SMOKE DETECTOR. COORDINATE WITH CONDUITING TO AVOID CONFLICTS WITH OTHER SYSTEMS.
- 22 KEYPAD FOR SECURITY SYSTEM, MOUNTED AT 54" A.F.F., AND 6" MIN FROM CENTERLINE OF J-BOX TO ANY CONFLICTING ITEM ON THE WALLS. DO NOT MOUNT ON HANDLE-SIDE OF THE NON-SALES DOOR LEADING TO THE SALES AREA, WITH 3/4" CONDUIT FROM JUNCTION BOX TO ABOVE CEILING.
- 23 MOTION DETECTOR TO BE INSTALLED AT EACH ENTRY/ROLLING GRILLE, EVERY EXIT DOOR, ABOVE EVERY CASHWAP, AND IN THE NON-SALES CEILING CLOSE TO THE NON-SALES/SALES DOOR. VERIFY EXACT LOCATIONS WITH LS&C PROJECT MANAGER PRIOR TO WORK COMMENCEMENT.
- 24 JUNCTION-BOX AND CODE REQUIRED-DISCONNECT SWITCH-FOR-MOTORIZED-ROLL-UP GRILLE ELECTRICAL CONNECTION—COORDINATE EXACT LOCATION AND RELATED REQUIREMENTS WITH LS&C PROJECT MANAGER PRIOR TO WORK COMMENCEMENT.
- 25 PROVIDE A DEDICATED ISOLATED GROUND DUPLEX RECEPTACLE AND DATA BOX AT 15" AFF FOR A.L.T. SYSTEM.
- 26 KEY PAD AT BACK DOOR AT +48" AFF. SEE DETAIL K SHEET E04.02.

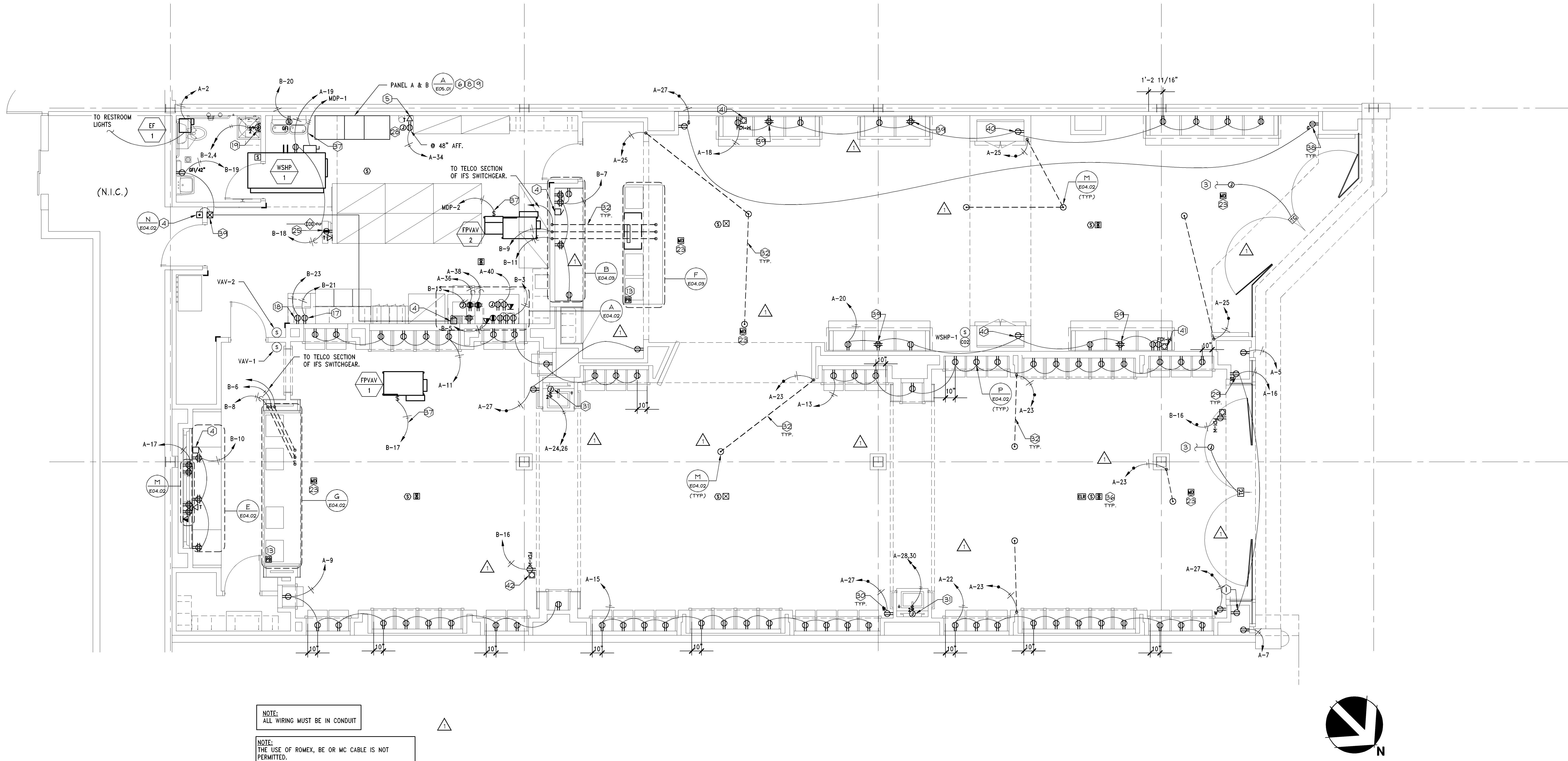
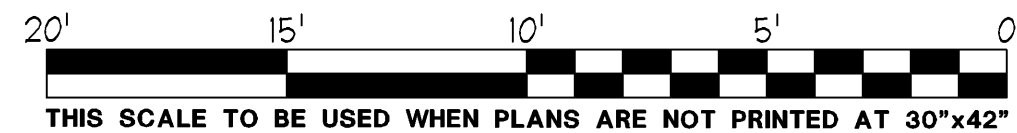
- 27 DOOR CONTROL FOR BURGULAR ALARM. GENERAL CONTRACTOR SHALL FURNISH AND INSTALL JUNCTION BOX AND 3/4" CONDUIT FROM ABOVE CEILING TO: 8" A.F.F. ON SIDE JAMB FOR ALL ROLLING GRILLE DOORS, AND/OR 6" AWAY FROM DOOR, ALIGNED WITH THE TOP OF THE DOOR OF EACH ALL SWING DOORS.
- 28 4"x4" JUNCTION BOX MOUNTED AT 60" A.F.F. WITH 1-1/4" DOOR (WITH BUSHING) UP TO CEILING. VERIFY EXACT LOCATION WITH ARCHITECT PRIOR TO WORK COMMENCEMENT.
- 29 RECEPTABLES AND COVERS PLATES WITH SHOW WINDOW SHALL BE WHITE IN COLOR. REFER TO ARCHITECTURAL DETAILS FOR EXACT LOCATION AND MOUNTING REQUIREMENTS.
- 30 RECEPTABLES AND COVERS PLATES SHALL BE WHITE IN COLOR. EXCEPT AS NOTED ON PLAN, MOUNT AS CLOSE TO FRONT OF WALL AS POSSIBLE (TO CLEAR BASE CABINET), AT 15" A.F.F. REFER TO ARCHITECTURAL SHEET A10.01, DETAIL A FOR MORE INFORMATION.
- 31 JUNCTION BOX AND TOGGLE DISCONNECT SWITCH FOR 208V, 1P WATER HEATER ELECTRICAL CONNECTION. COORDINATE EXACT LOCATION AND RELATED REQUIREMENTS WITH PLUMBING CONTRACTOR PRIOR TO WORK COMMENCEMENT.
- 32 SAW CUT/CORE DRILL AND PATCH FLOOR SLAB AS REQUIRED FOR UNDERSLAB CONDUIT. COORDINATE WITH LANDLORD'S FIELD REPRESENTATIVE.
- 33 ELECTRICAL CONTRACTOR SHALL COORDINATE EXACT LOCATIONS OF BARREL KEY SWITCHES BEFORE WORK COMMENCEMENT. ELECTRICAL CONTRACTOR SHALL CONNECT KEY SWITCH TO THE CONTROL BOARD AND THE DOOR LOCK INTERLOCK.
- 34 FURNISH AND INSTALL HORIZONTAL DUPLEX RECEPTABLE FOR POWER TO LED STRIP/TAPE LIGHTING. VERIFY EXACT MOUNTING LOCATIONS SEE THE A10 SERIES.
- 35 FIRE ALARM CONTROL PANEL WITH BATTERY BACK-UP AND A MINIMUM OF 6 ZONES FURNISHED AND INSTALLED BY FIRE ALARM CONTRACTOR. FIRE ALARM CONTROL PANEL SHALL BE TIED-IN WITH THE EXISTING MALL CENTRAL FIRE ALARM SYSTEM. CONTRACTOR SHALL COORDINATE WITH THE LANDLORD ENGINEER ALL FINAL SEQUENCES OF OPERATION.
- 36 FIRE ALARM DEVICES FURNISHED AND INSTALLED BY THE FIRE ALARM CONTRACTOR (REFER TO SPECIFICATIONS FOR MOUNTING HEIGHTS OR TYPE) WIRING BY ELECTRICAL CONTRACTOR.
- 37 SEE SHEET E05.01 ELECTRICAL EQUIPMENT DATA FOR WIRE SIZE.
- 38 RECEPTABLES AND COVERS PLATES DESIGNATED "G" SHALL BE GRAY IN COLOR. EXCEPT AS NOTED ON PLAN, MOUNT AS CLOSE TO FRONT OF WALL AS POSSIBLE (TO CLEAR BASE CABINET), AT 15" A.F.F. REFER TO ARCHITECTURAL SHEET A10.01, DETAIL A FOR MORE INFORMATION.
- 39 DOW RECEPTABLE WITH GRAY RECEPTABLES AND COVER PLATE MOUNTED AT 97" A.F.F. CENTER ABOVE CABINETS.
- 40 DUPLEX RECEPTABLE WITH WHITE RECEPTABLE AND COVER PLATE MOUNTED AT 3'-1" A.F.F. REFER TO DETAIL B/A11.3.

- 41 WHITE BARN SCENTAIR TO BE SET ON TOP OF CABINET AND PLUGGED INTO QUAD RECEPTACLE.
- 42 BATH & BODY WORKS SCENTAIR TO BE CEILING MOUNTED.

**NOTE:**  
REFER TO RESPONSIBILITY SCHEDULE FOR  
CONTRACTOR'S RESPONSIBILITIES.

## ELECTRICAL POWER AND FIRE ALARM PLAN KEYNOTES

|                           |                      |
|---------------------------|----------------------|
| <b>NTS</b>                | <b>D</b><br>11/11/11 |
| <b>42N-E0201-D00-NOTE</b> |                      |



**"VERIFY ALL FIELD CONDITIONS PRIOR TO BID"**

## ELECTRICAL POWER PLAN

**1/4" = 1'-0"**

A

DRAWING NUMBER:

EO 2.0

100



**LARSON BINKLEY**

Larson Binkley, Inc. T 816-997-9601  
310 W 20th Street, Suite 200 F 816-997-9602  
Kansas City, Missouri 64108 [larsonbinkley.com](http://larsonbinkley.com)  
Florida Certificate of  
Authorization Number 8039

Adrian T. Franks, PEO076324

**Lbrands**  
STORE DESIGN & CONSTRUCTION  
Three Limited Parkway • Columbus, Ohio 43230  
Telephone: 614.415.7000 • Fax: 614.415.7349

[illegible]

PROJECT INFORMATION: **014200814**

**BATH & BODY WORKS**  
**WHITE BARN CANDLE CO.**  
**THE GARDENS MALL**

3101 PGA BOULEVARD  
PALM BEACH GARDENS, FL 33410

SCOPE: FULL RENO | PACKAGE: 1+  
DESIGN TYPE: EASTON—G | GENERATION: 14/150

| REVISIONS: |  |           |
|------------|--|-----------|
| 1          | REQUIRED BY:                           | DATE      |
| 2          | OWNER & LANDLORD COMMENTS              | 12/31/11  |
|            | L.L. COMMENT - MECHANICAL REQUIREMENTS | 1/16/2012 |

ELITE CONSTRUCTION GROUP  
LAKE JACKSON, TX  
PHONE: 979-285-0712  
NOTE: THESE PRINTS HAVE BEEN  
REDUCED BY 50 PERCENT. SCALE  
WILL BE 50 PERCENT OF WHAT IS  
NOTED ON PLANS

DATE ISSUED: 10/24/201  
DESIGNED BY: ARV  
DRAWN BY: ARV  
CHECKED BY: AT

## ELECTRICAL POWER PLAN

DRAWING NUMBER:

E02.01